

ABCDE'S

Skin Cancer



A

symmetry



SYMMETRICAL:

Benign (non-cancerous and non-malignant) moles are typically round.



ASYMMETRICAL:

Melanoma (cancerous and malignant) lesions are typically irregular in shape.

B

order



EVEN:

Benign moles have smooth, even borders.



RAGGED OR NOTCHED EDGES:

Melanoma lesions often have uneven borders.

C

olor



SINGLE SHADE:

Benign moles are usually a single shade of brown.



MANY SHADES:

Melanoma lesions often contain many shades of brown or black.

D

iameter



<6MM OR 1/4":

Benign moles are usually less than 6 millimeters in diameter.



>6MM OR 1/4":

Melanoma lesions are often more than 6 millimeters in diameter.

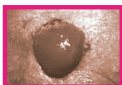
E

volving



FLAT:

Benign moles usually do not change size over time.



ELEVATED:

Melanoma lesions often grow in size or change in height rapidly.



M E L A N O M A A W A R E N E S S A N D E D U C A T I O N